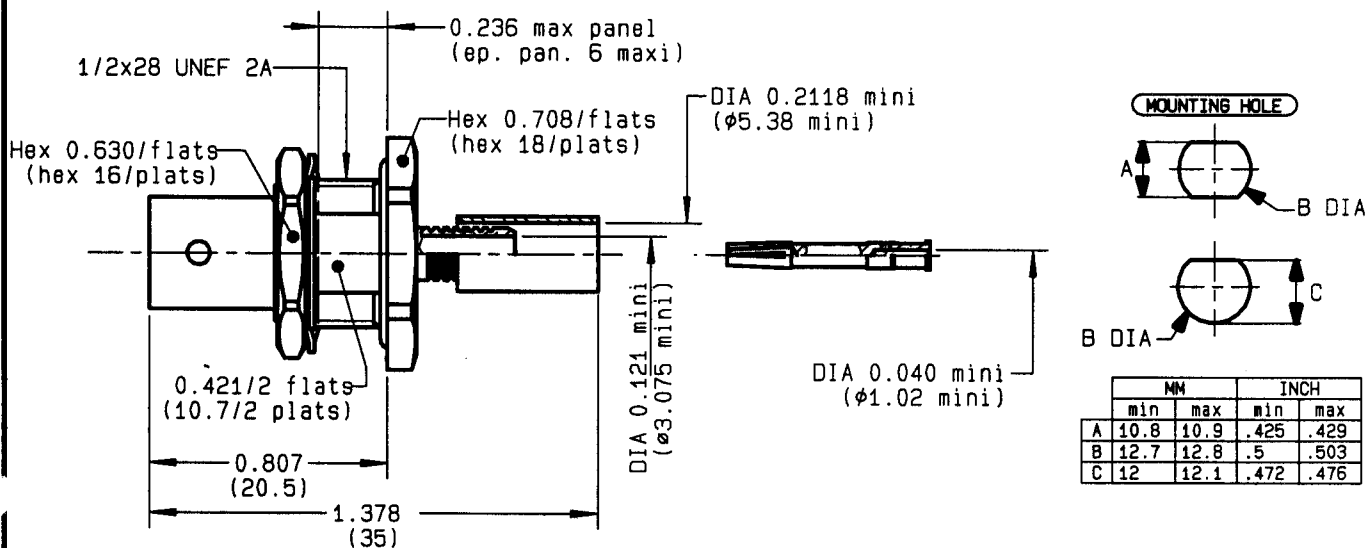


**STRAIGHT BULKHEAD JACK PANEL SEAL**  
**REAR MOUNT CRIMP TYPE - CABLE 5/50 S**

**R141.332.500**

**SERIES**

**BNC**



NOMINAL IMPEDANCE	<b>50</b> $\Omega$
FREQUENCY RANGE	<b>0-4</b> GHz
TEMPERATURE RATING	<b>-65/+165</b> °C
V.S.W.R	<b>1.3 + 0</b> x F(GHz)Maxi
RF INSERTION LOSS	<b>TBD</b> $\sqrt{F}$ (GHz) dB Maxi
VOLTAGE RATING	<b>500</b> Veff Maxi
DIELECTRIC WITHSTANDING VOLTAGE	<b>1500</b> Veff Mini
INSULATION RESISTANCE	<b>5000</b> M $\Omega$ Mini
HERMETIC SEAL	<b>NA</b> Atm.cm <sup>3</sup> /s
LEAKAGE (pressurized only)	<b>NA</b>
MECHANICAL DURABILITY	<b>500</b> Cycles
WEIGHT	gr
SPECIFICATION	

CABLES : **KX 15**  
**RG 141**  
**RG 58**

OTHERS CHARACTERISTICS

CABLE RETENTION	<b>90</b> N Mini
CENTER CONTACT RETENTION	
Axial force - mating end	<b>27</b> N Mini
Axial force - opposite end	<b>27</b> N Mini
Torque	<b>NA</b> cm.N Mini
RECOMMENDED TORQUES	
Mating	<b>NA</b> cm.N
Panel nut	<b>370</b> cm.N
Clamp nut	<b>NA</b> cm.N

CONNECTOR PARTS	MATERIALS	FINISH	(all values are given in micrometers)
BODY	BRASS	NICKEL 2	
OUTER CONTACT			
CENTER CONTACT	BERYLLIUM COPPER	GOLD 0.5 OVER NICKEL 2	
INSULATOR	PTFE	-	
GASKET	SILICONE RUBBER	-	
OTHERS PIECES	BRASS	NICKEL 2	

PICTON

ISSUE	CREATION DATE	FILE PART-NUMBER
<b>9910B02</b>	<b>01-DEC-88</b>	



**RADIALL**®

The information given here is subject to change without notice. Design changes may be in order to improve the product.

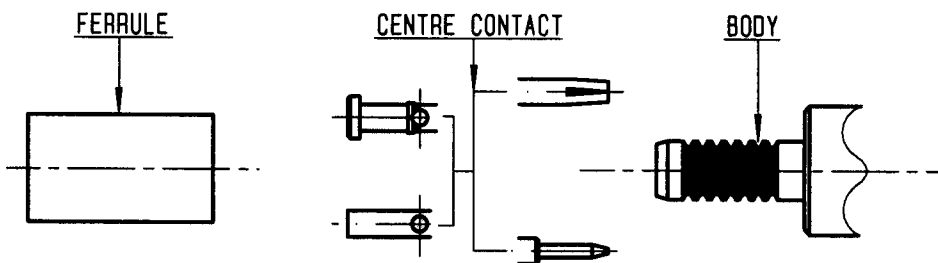
Connect to the future



**R141.332.500**

ISSUE 9910B02 SERIES

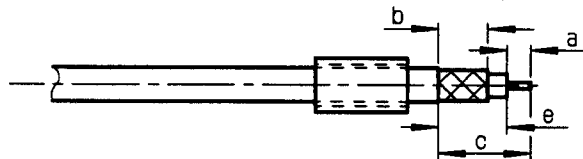
BNC



①

Slide onto the cable the ferrule  
Strip the cable .

-  
-



Stripping	a	b	c	d	e
inch	0.157	0.335	0.591	0	0.433
mm	4	8.5	15		11

②

Slide on centre contact until it  
bottoms against cable dielectrique .  
Crimp centre contact .

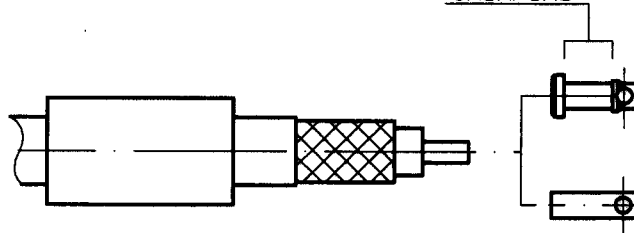
Crimping tool : R282 223 000 ( Hex. : .068 )

or R282 293 000 ( M22520/5-01 )

+ dies R282 235 011 ( M22520/5-11 ) .

-  
-  
-

CRIMPING



③

Fan the braid .

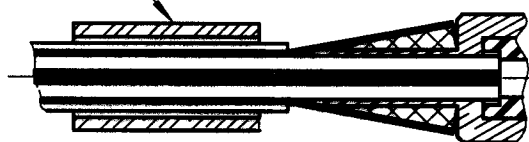
Slide cable into the body until  
bottoms against insulator .

Slide ferrule over the braid .

(In direction F)

FERRULE

F



④

Crimp the ferrule with crimping tool

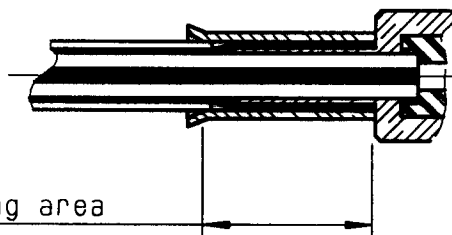
R 282 223 000 ( Hex. : .213 ) or

crimping tool R282 293 000 (M22520/5-01)

+ dies R282 235 011 (M22520/5-11)

Cut the excess of braid .

-  
-  
-  
-



Crimping area

PICTON